

# A collaborative approach to collecting species-specific manta and devil ray catch data and assessing handling effects on post release survival

SC21-EB-WP-09



Jennifer Stahl<sup>1</sup>, Melanie Hutchinson<sup>2, 3</sup>, Joshua Tucker<sup>1, 4</sup>,  
Forest O'Neil<sup>5</sup>, Chelsey Young<sup>6</sup>, Kim Parsons<sup>7</sup>, and Emily Crigler<sup>1</sup>

<sup>1</sup> Pacific Islands Fisheries Science Center, National Marine Fisheries Service, <sup>2</sup> Inter-American Tropical Tuna Commission, <sup>3</sup> Hawaii Community Tagging Program, <sup>4</sup> Cooperative Institute for Marine and Atmospheric Research, <sup>5</sup> IBSS Corp, <sup>6</sup> Pacific Islands Regional Office, National Marine Fisheries Service, <sup>7</sup> Northwest Fishery Science Center, National Marine Fisheries Service



# The problem:

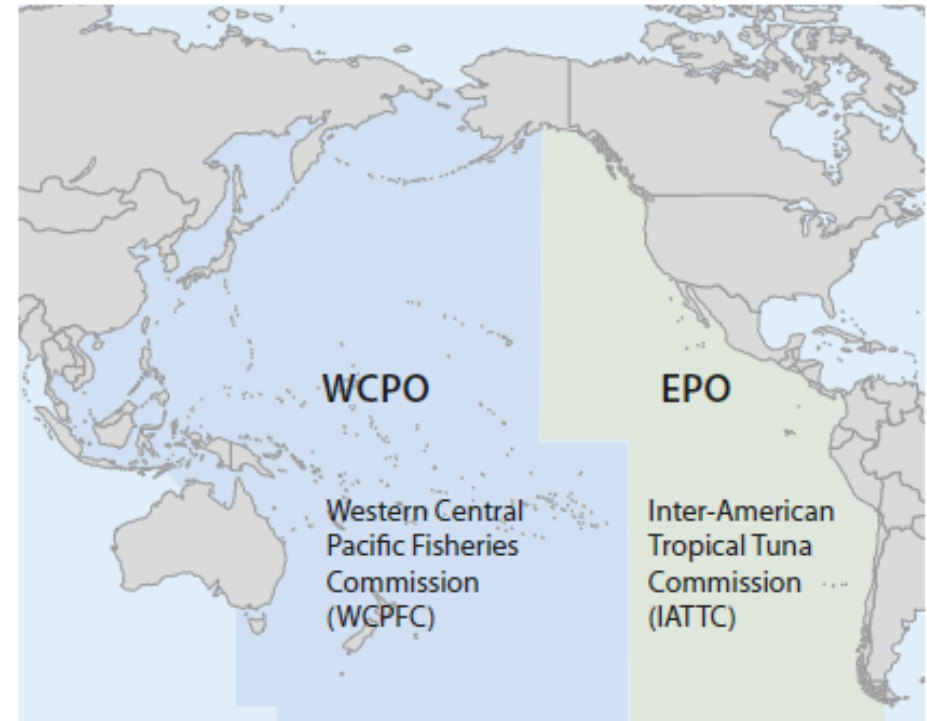
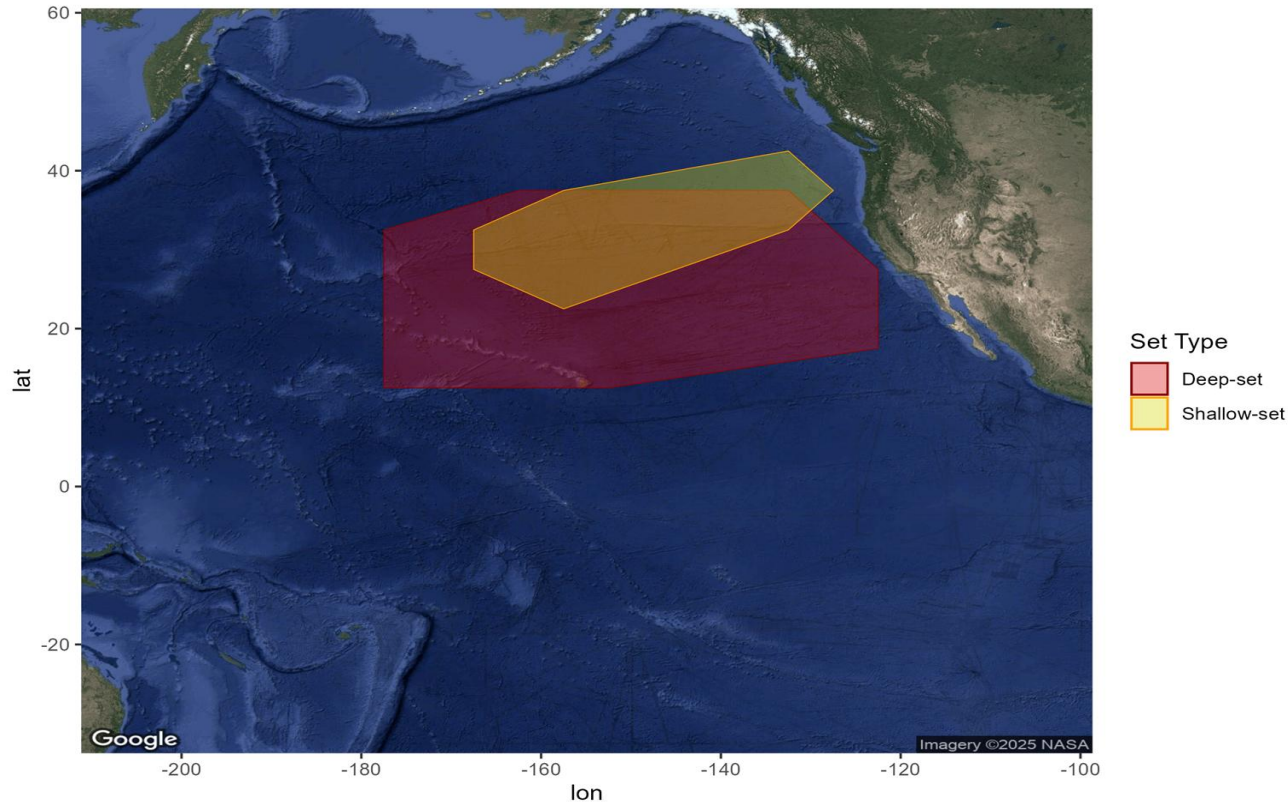
- Giant/oceanic manta ray (*Mobula birostris*) listed as threatened throughout their range under US Endangered Species Act (ESA) in 2018.
- Fishing mortality greatest threat to population recovery
- Major data gaps in US Longline : 1) species-specific catch rates, 2) survival rates post-interaction.



# Spatial overlap

- 8 species found in PO
- 7 in WCPO, 5 in EPO
- Hawaii based LL fishery overlaps with 5

Hawaii Longline Fishing Footprint



## WCPO

*Mobula birostris*  
*Mobula alfredi*  
*Mobula tarapacana*  
*Mobula mobular*  
*Mobula thurstoni*  
*Mobula eregoodoo*  
*Mobula kuhlii*

## EPO

*Mobula birostris*  
*Mobula tarapacana*  
*Mobula mobular*  
*Mobula thurstoni*  
*Mobula munkiana*

# Addressing the problem:

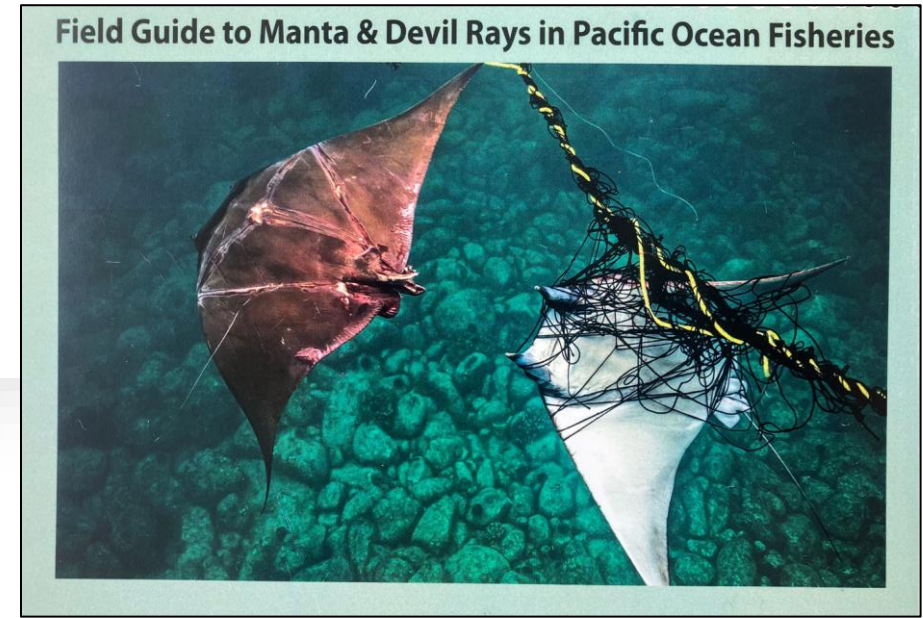
- Improving species identification
- Elucidate post release fate & handling impacts





# Addressing the problem:

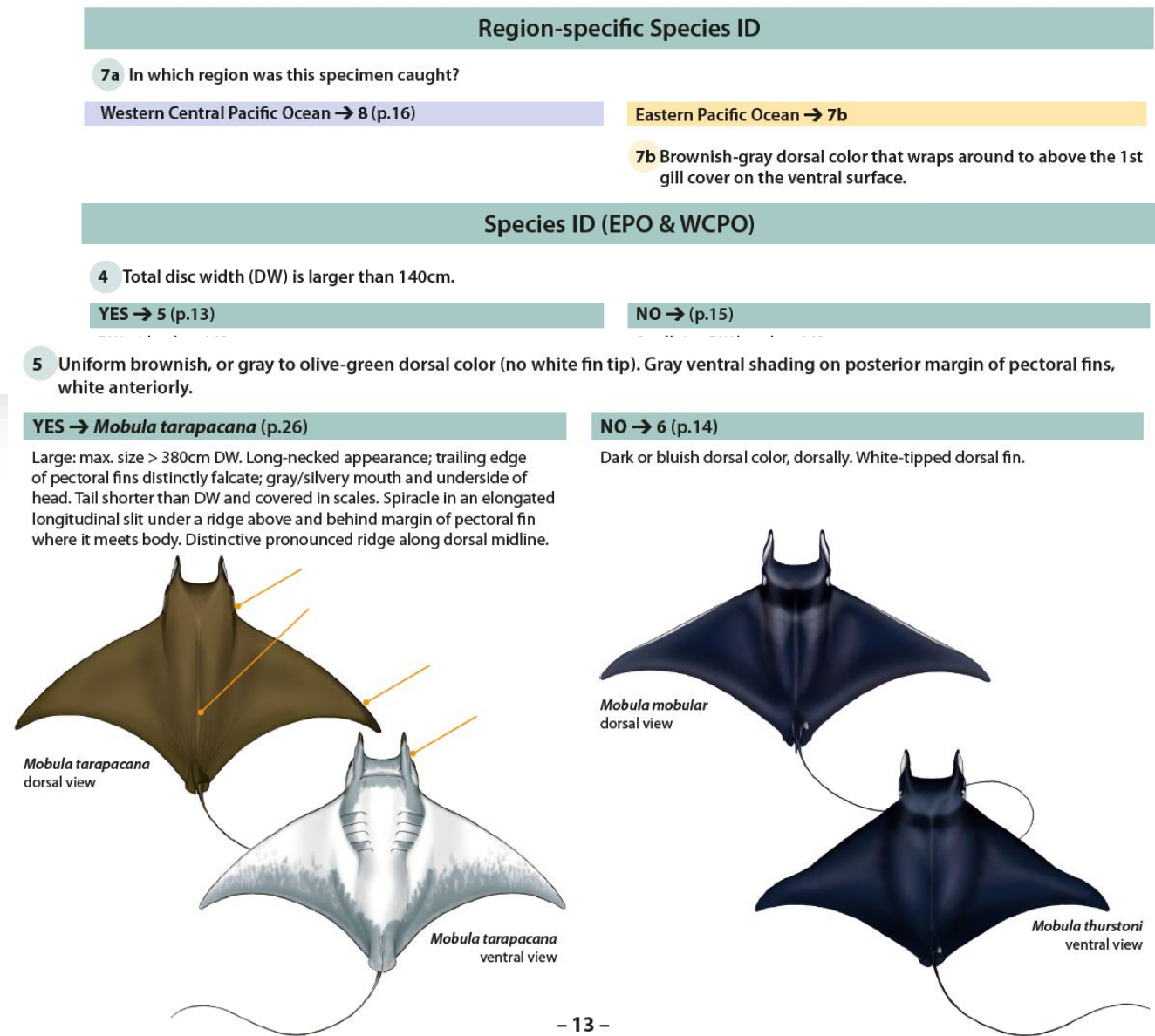
- Improving species identification
  - Development of an ID Guide
- Elucidate post release fate & handling impacts



# Addressing the problem:

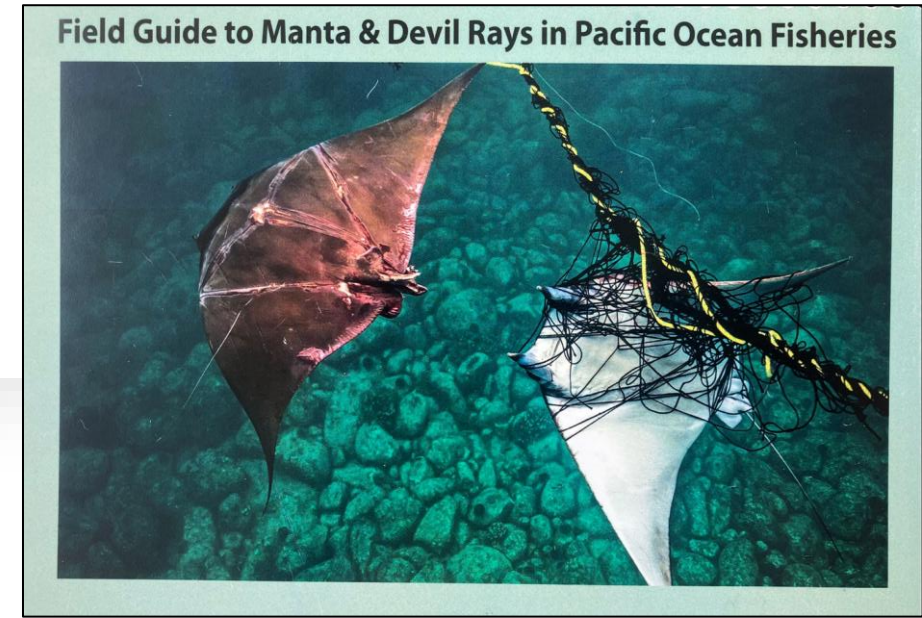
## Improving species identification

- Development of an ID Guide
  - a) Region
  - b) Size
  - c) Coloration



# Addressing the problem:

- Improving species identification
  - Development of an ID Guide
    - Training observers and debriefers
  - **Requesting imagery from fishers, observers and Electronic Monitoring (EM) projects**
- Elucidate post release fate & handling impacts



# Addressing the problem:

- Improving species identification
  - Development of an ID Guide
    - Training observers and debriefers
  - Requesting imagery from fishers, observers and Electronic Monitoring (EM) projects
  - **Genetic sampling (PIROP & NWFSC)**
- Elucidate post release fate & handling impacts





## Data required for each tag deployed

The below data fields are requested for each interaction with a mobulid ray. (See identification instructions next page). Successful tag events with good data and footage will be reimbursed at a rate of \$800 USD.

Please take a photo of the data on this sheet and email or text us as soon as you return to port 😊

Email: [pacificsharktagger@gmail.com](mailto:pacificsharktagger@gmail.com) and/or Text Forest O'Neil: 808.321.9188

Tag serial #: \_\_\_\_\_, Tag PTT #: \_\_\_\_\_, Tag location: ☐ Left wing, ☐ Right wing

Trip No. \_\_\_\_\_, Set No. \_\_\_\_\_, Date \_\_\_\_/\_\_\_\_/\_\_\_\_, MM DD YY

Time \_\_\_\_\_, Latitude \_\_\_\_\_ N / S, Longitude \_\_\_\_\_ W / E

Sex: ☐ Claspers present (male), ☐ Claspers absent (female), ☐ Undetermined

Hook/entanglement location: ☐ Mouth, ☐ Cephalic fin, ☐ Wing, ☐ Body,

☐ Other \_\_\_\_\_

Capture condition: ☐ Good, ☐ Injured, ☐ Lethargic, ☐ Dead (Please don't tag dead animals)

Release condition: ☐ Good, ☐ Injured, ☐ Lethargic, ☐ Dead

Handling/release method: ☐ Line cut, ☐ Dehooker, ☐ Escaped, ☐ Other \_\_\_\_\_

Trailing gear? \_\_\_\_\_ ft, Comments: \_\_\_\_\_

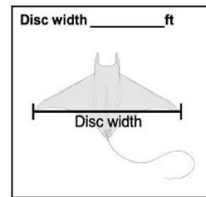
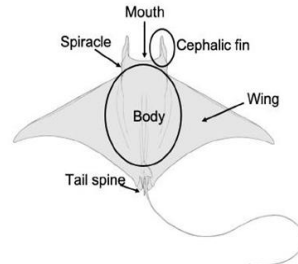
### Condition Definitions:

**Good** - Animal active and energetic, no visible signs of trauma or injury, no bleeding from the vent or gills, fights against the gear, swims away well.

**Injured** - Clear evidence of injury to any part of the body; bleeding may be seen from the hook, gills or vent.

**Lethargic** - Animal exhibits signs of life but does not appear very active; still makes efforts to swim.

**Dead** - Animal does not exhibit signs of life, sinks or sinks upside down.



- Elucidate post release fate & handling impacts
- Telemetry - trained fishers to tag and record additional data



# Addressing the problem:

- Improving species identification
  - Development of an ID Guide
    - Training observers and debriefers
  - Requesting imagery from fishers, observers and EM projects
  - Genetic sampling
- Elucidate post release fate & handling impacts
  - Telemetry - trained fishers to tag and record additional data
  - **PIROP Observers collected additional interaction data**





# PIROP Data Collections

## Elasmobranch form

- ***Disposition*** - Record condition of animal at release.
- ***Hook/entanglement locations***
- ***Handling*** - Record how mobula is removed from gear
- ***Gear remaining*** (trailing gear)

## Catch form

- **Species code** - Add comment for scientific name.
- **Length** - Wingspan (disc width)
- **Sex**

[illegible]

# PIROP Data Collections

## Elasmobranch form

- ***Disposition*** - Record condition of animal at release.
- ***Hook/entanglement locations***
- ***Handling*** - Record how mobula is removed from gear
- ***Gear remaining***

## Catch form

- **Species code** - Add comment for scientific name.
- **Length** - Wingspan (disc width)
- **Sex**

## Data codes for species ID:

- Other Ray
- Manta/Mobula Ray
- Mobula (Devil Ray)
- Giant Manta Ray

[illegible]



# Addressing the problem:

- Improving species identification
  - Development of an ID Guide
    - Training observers and debriefers
  - Requesting imagery from fishers, observers and EM projects
  - Genetic sampling
- Elucidate post release fate & handling impacts
  - Telemetry - trained fishers to tag and record additional data
  - PIROP Observers collected additional interaction data
  - **EM program review of mobula interactions**



# Mobula Genetic Results

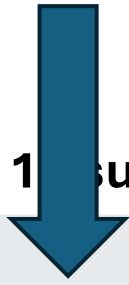
N = 42 Samples, N = 36 Positive ID, N = 1 Could not be resolved, N = 5 Awaiting processing

Genetic Sampling IDs			
Manta spp.	<i>Mobula alfredi</i> / <i>Mobula birostris</i> *	1	3%
Spinetail devil ray	<i>Mobula mobular</i>	7	19%
Sicklefin devil ray	<i>Mobula tarapacana</i>	7	19%
Bentfin devil ray	<i>Mobula thurstoni</i>	21	58%



# Tag Results

N = 15 tags: 1 mortality, 1 survivors, 1 non-reporter, 1 lost, 1 bad deploy



Species	No. Tags	Hook / entanglement locations	Release condition	Trailing gear	Post-release fate	Deploy period (days)
<i>M. birostris</i>	2	N=2 Entangled	N=1 Good N=1 <b>Injured</b>	0, NR	N =1 survivor N =1 bad deploy	60
<i>M. tarapacana</i>	2	N=2 Foul hooked	N=1 Good N=1 <b>Injured</b>	0.9 -1.2 m	N=2 survivor	58-60
<i>M. mobular</i>	4	N=1 Entangled N=3 Foul hooked	N=1 Good N=2 <b>Injured*</b> N=1 Lethargic	0- 0.6 m	N = 2 survivor <b>N=1 mortality*</b> N=1 non reporter	10*-60
<i>M. thurstoni</i>	6	N=4 Foul hooked N=2 Mouth hooked	N=4 Good N = 1 Alive N=1 <b>Injured</b>	0.2 – 1.2 m	N = 6 survivor	60



# Electronic Monitoring (EM) Data Collection

*What mobulid interaction details can EM systems reliably collect?*

N = 24 interactions were flagged for review  
(Observer data set and during tag events)





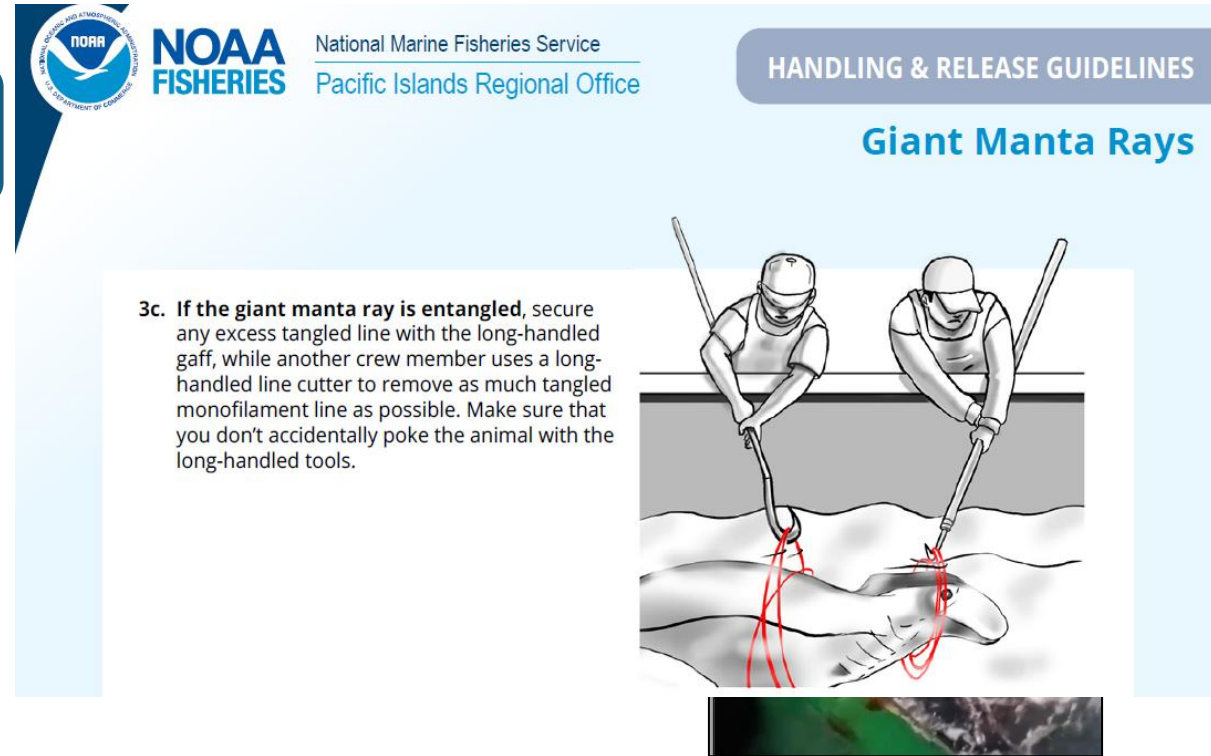
# Electronic Monitoring (EM) Data Collection

*What mobulid interaction details can EM systems reliably collect?*

N = 24 interactions were flagged for review  
(Observer data set and during tag events)

## Data collectable with EM:

- Species ID 79% of the time
- Disc Width (“wingspan”) possible with additional validation
- Hook/entanglement location
- Condition
- Handling/release methods
- Trailing gear



# Next steps: Review PIROP data

## Elasmobranch form

- ***Disposition*** - Record condition of animal at release.
- ***Hook/entanglement locations***
- ***Handling*** - Record how mobula is removed from gear
- ***Gear remaining***

## Catch form

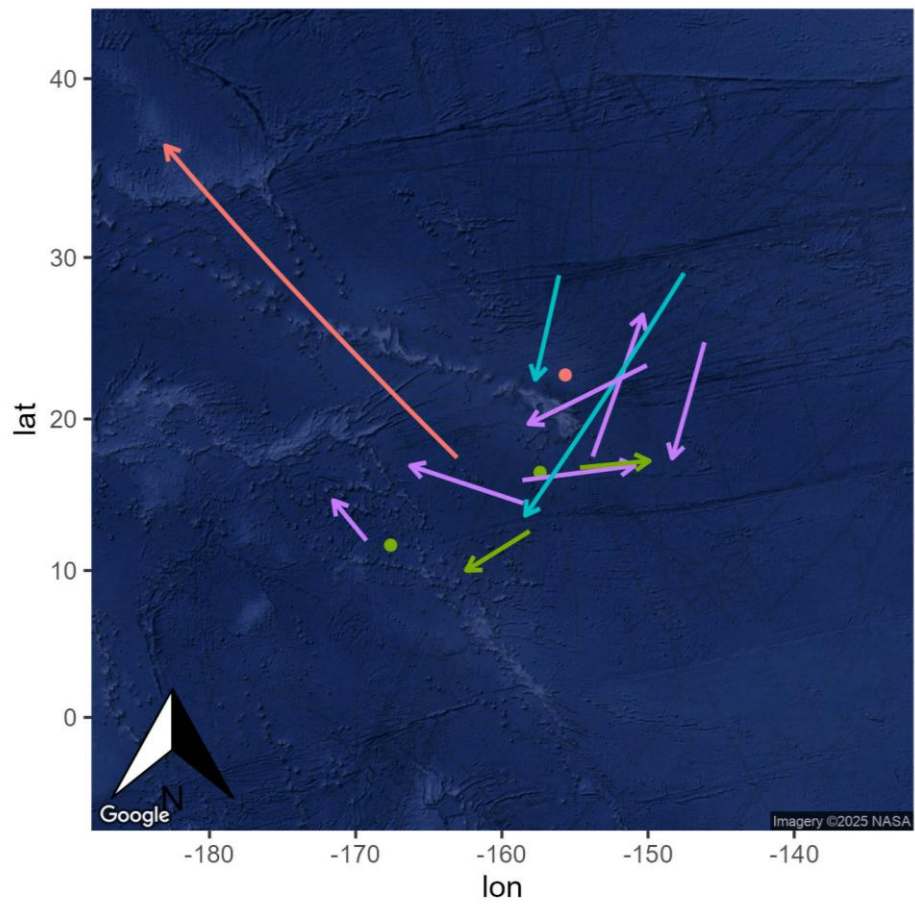
- **Species code** - Add comment for scientific name.
- **Length** - Wingspan (disc width)
- **Sex**

### Data codes for species ID:

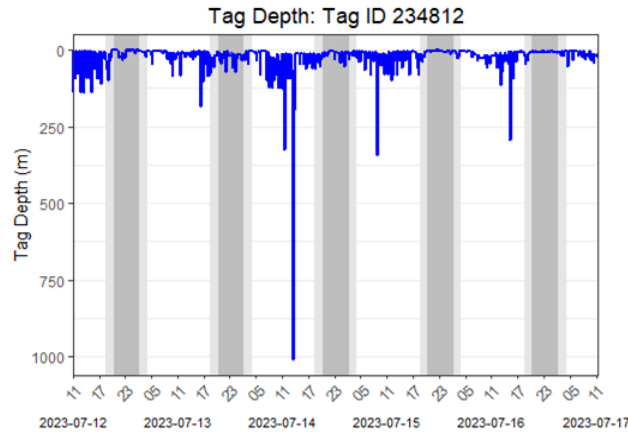
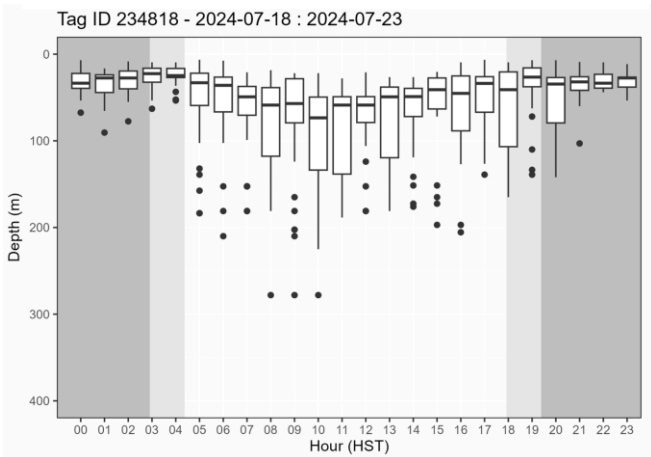
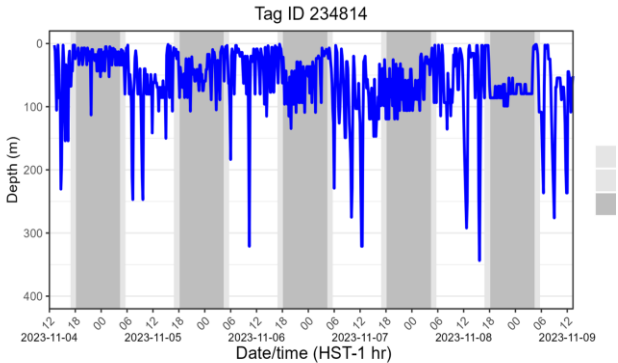
- Other Ray
- Manta/Mobula Ray
- Mobula (Devil Ray)
- Giant Manta Ray

[illegible]

# Next steps – Habitat use



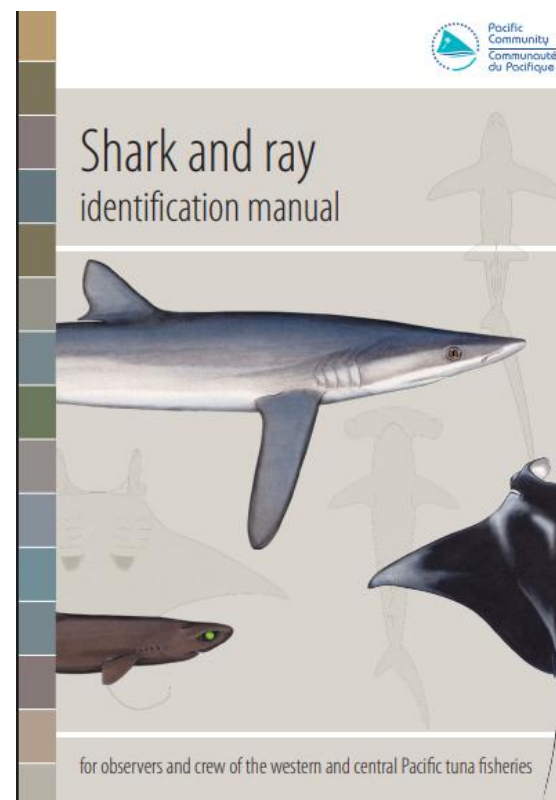
- Species
- M. birostris
  - M. mobular
  - M. tarapacana
  - M. thurstoni





# Conclusions & Recommendations

- US Hawaii-based LL fisheries interacts with at least 4 spp. (*M. birostris*, *M. tarapacana*, *M. mobular*, *M. thurstoni*)
- Good tools available for high confidence species level interaction data (ID Guides, EM programs, genetics)
- Post release survival may be relatively high for mobulids released using BHRP, but additional tagging is required for PRS rates and to identify good predictors
- Electronic Monitoring technologies can capture important interaction data
- Fishers are excellent partners for telemetry programs





# Acknowledgements

- Funding from the NOAA Office of Protected Species
- Hawaii longline fishers!!!
- Genetics project: Jamie Marchetti (NOAA PIRO).



Photo credit: Corey Nevels



<https://www.sharktagger.org/mobulid-id-guide>